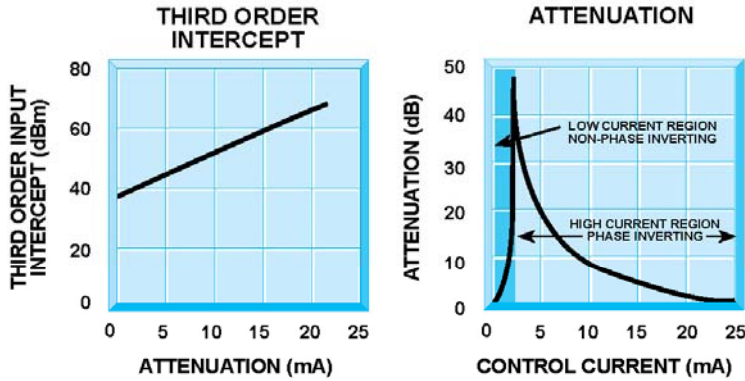


# ATT-9800 IMPEDANCE MATCHED IF ATTENUATOR

## ATT-9800 Series Impedance Matched IF Attenuator



### Guaranteed Specifications (-54° to +85°C)

Frequencies (CW) 30, 60, 120, 200 MHz ±5%

Insertion Loss 1.5 dB Max.

VSWR 1.5:1 Max.

Attenuation Range (200 MHz) 20 dB

Attenuation Range (30 MHz) 30 dB

Impedance 50 Ohms

Control Range Voltage 0 to 12 Volts

Current Range 10 MA Max.

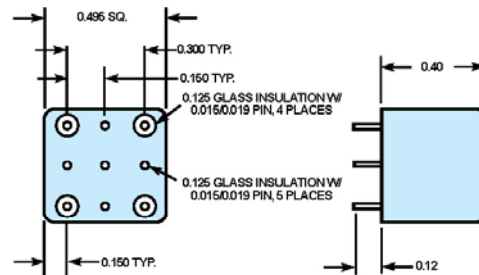
ATT-9801 30 MHz ±5%

ATT-9802 60 MHz ±5%

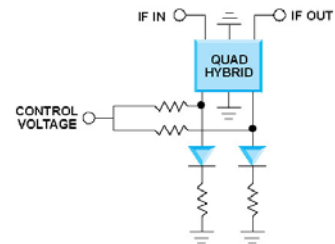
ATT-9803 120 MHz ±5%

ATT-9804 200 MHz ±5%

### Mechanical Outline



### Functional Schematic



STC Microwave Systems – [www.craneae.com](http://www.craneae.com)  
 28 Tozer Road • Beverly, MA 01915  
 phone: 978-524-7200 • email: [electronics@craneae.com](mailto:electronics@craneae.com)

Revision ATT-9800 2005.08252005

STC MICROWAVE SYSTEMS - OLEKTRON  
 A CRANE CO. COMPANY

