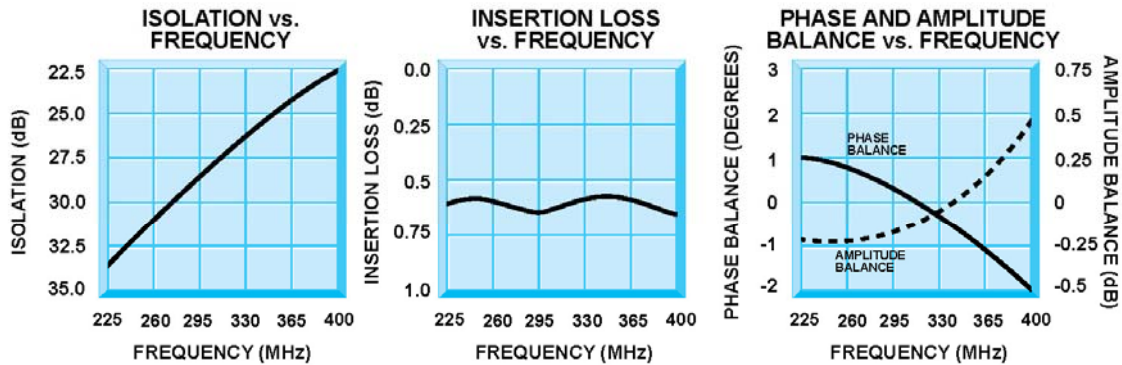




J4-40005 QUADRATURE HYBRID

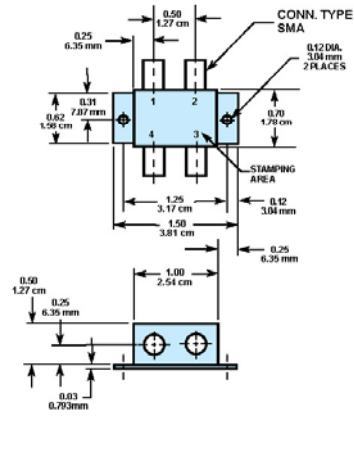
J4-40005 225 to 400 MHz Quadrature Hybrid



Guaranteed Specifications (-54° to +85°C)

| | |
|-------------------|----------------|
| Frequency Range | 225 to 400 MHz |
| Isolation | 20 dB Min. |
| Insertion Loss | 0.75 dB Max. |
| VSWR | 1.3:1 Max. |
| Phase Balance | ±4° Max. |
| Amplitude Balance | ± 0.75 dB Max. |
| Impedance | 50 Ohms |
| Power Handling | 3 Watts Max. |

Mechanical Outline



Truth Table

| OUT \ IN | 1 | 2 | 3 | 4 |
|----------|------|------|------|------|
| 1 | X | ISOL | 0° | -90° |
| 2 | ISOL | X | -90° | 0° |
| 3 | 0° | -90° | X | ISOL |
| 4 | -90° | 0° | ISOL | X |

STC Microwave Systems – www.cranae.com
 28 Tozer Road • Beverly, MA 01915
 phone: 978-524-7200 • email: electronics@cranae.com

Revision 11-40005 2005 08252005

STC MICROWAVE SYSTEMS - OLEKTRON
 A CRANE CO. COMPANY

