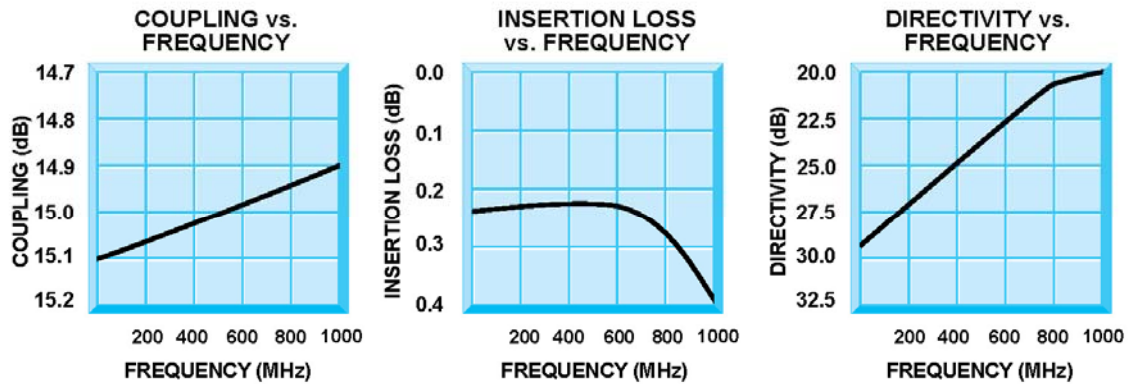


D3-50003 15 dB DIRECTIONAL COUPLER

D3-50003

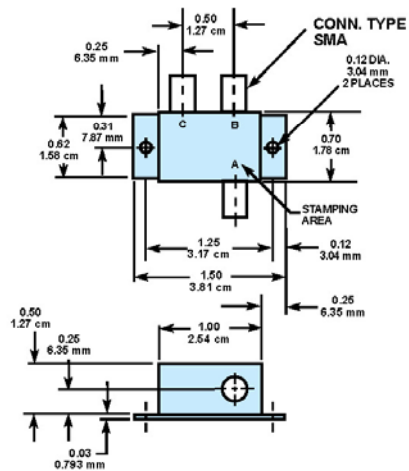
10 to 1000 MHz 15 dB Directional Coupler



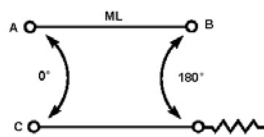
Guaranteed Specifications (-54° to +85°C)

Frequency Range	10 to 1000 MHz
Coupling	15 ± 0.35 dB
Coupling Flatness	±0.35 Max.
Insertion Loss	0.65 dB Max.
Directivity	20 dB Min.
VSWR	1.4:1 Max.
Impedance	50 Ohms
Power Handling	3 Watts Max.

Mechanical Outline



Functional Schematic



STC Microwave Systems – www.cranae.com
 28 Tozer Road • Beverly, MA 01915
 phone: 978-524-7200 • email: electronics@cranae.com

Revision D3-50003 2005 08252005

STC MICROWAVE SYSTEMS - OLEKTRON
 A CRANE CO. COMPANY

